

Entity Relationship Diagram Schema

Overview

This document contains the details of the database schema of the Inventory module used by Desktop Central . This can be used by the third-party reporting engines to retrieve the information from these tables.

Database Details

Database details such as data type, storage format and data description is explained in this document.

Supported Database:

MySql and MSSQL (2005 or higher versions)

Database Connection Details

Steps to connect MySql Database and MSSQL Database are explained below.

Connecting Mysql Database

Database are maintained by two types, such as Built in and the other is Remote Database.

Note: Ensure that you provide database access to the computers which should contact the Desktop Central Server.

To provide access follow the steps mentioned below.

- Click on **Admin Tab > MySQL Remote DB Access**
- Enter the **Remote Computer Name**
- Specify **Grant / Revoke** access

DB Details for Built in Database

Host Name	:	db server name
Database Name	:	desktopcentral
Port	:	23306
User Name	:	root
Password	:	empty

Connecting MSSQL Database :

You can use your expertise to connect Desktop Central Database with the MSSQL server. To know more about the MSSQL Server details such as Server Type, Server Name and Authentication [read this](#).

Table Details

1. [Resource](#)- Contains information about all the resources available in Desktop Central.
2. [ManagedComputer](#) - Contains the list of computers managed by Desktop Central.
3. [ManagedComputerExtn](#)- Contains the extension of ManagedComputer table which hold some additional info about Managed Computers.
4. [InvHW](#) - Contains list of all the hardware in the inventory.
5. [InvHWComponent](#) - contains the components of all the available hardware.
6. [InvComputer](#) - Contains list of the computers in the inventory.
7. [AgentContact](#) - Contains the details of the Agent.
8. [InvComponent](#) - Contains the type of hardware.
9. [InvManufacturer](#) - Contains manufacturer information of the inventory component.
10. [BranchMemberResourceRel](#) - Contains branch office details.
11. [InvBios](#) - Contains information about the Bios.
12. [InvComputerOSRel](#) - Contains information about the OS, Service Pack and available memory.
13. [InvSW](#) - Contains the count of each software present in managed domain.
14. [BranchOfficeDetails](#) - Contains details of branch office details.

Resource

Column Name	Description
RESOURCE_ID (PK)	A unique id representing the resource.
NAME	Name of the resource.
DOMAIN_NETBIOS_NAME	The netbios or Pre Windows2000 name of a domain.
IS_INACTIVE	Contains the status of the resource as Active or Inactive
DB_ADDED_TIME	The time when the resource was added in the network in datetime format.
DB_UPDATED_TIME	The time at which the resource was last updated in datetime format.

ManagedComputer

Column Name	Description
RESOURCE_ID (PK)	Resource ID from the resource table
ADDED_TIME	The time when the computer was added in the network
MODIFIED_TIME	The time when the resource of the computer was recently modified
AGENT_INSTALLED_ON	The time when the agent was installed
AGENT_INSTALLED_DIRECTORY	The location where the agent is installed
INSTALLATION_STATUS	The status of the agent installation

STATUS_UPDATED_TIME	The agent status last updated time in datetime format.
AGENT_VERSION	The installed version of the agent
REMARKS	Any remarks about the managed computer
GUID	GUID generated for the resource in the Active Directory.
FULL_NAME	full Qualified comp name
UUID	Unique ID of the computer. Applicable for both AD and Workgroup computers

ManagedComputerExtn

Column Name	Description
RESOURCE_ID (PK)	Resource ID from the resource table
OWNER	Name of the owner of the Computer Extension
LOCATION	Contains the location of the Computer.
SEARCH_TAG	Holds the tags for searching the computer and locating it
DESCRIPTION	Any other comments/description about this computer
OWNER_EMAIL_ID	Contains email address of the computers owner.

InvHW

Column Name	Description
HARDWARE_ID (PK)	Unique ID for each hardware component.
HARDWARE_NAME	Contains the particular hardware names.
MANUFACTURER_ID	Unique id for each manufacturer.
COMPONENT_TYPE	Type of the hardware component, such as Network Adapters/Sound Device/Monitor etc.
DETECTED_TIME	The time when the hardware has been detected in datetime format.
CUSTOMER_ID	Customer ID for storing customer specific email details

InvHWComponent

Column Name	Description
COMPONENT_ID	Unique ID for each type of inventory component.
HARDWARE_ID (PK)	Hardware ID from the

	hardware table.
COMPONENT_STATUS	The status of the component.
COMPONENT_DESCRIPTION	Description of the component.
DEVICE_ID	UniqueID for each hardware.
COMPONENT_STATUS_DESCRIPTION	The status description in detail of the component

InvComputer

Column Name	Description
COMPUTER_ID (PK)	Computer ID from the resource table
BOOT_UP_STATE	Contains the boot up state of the Computer.
CAPTION	Contains the caption of the Computer.
DESCRIPTION	Contains the description of the Computer
DOMAIN_NAME	Contains the Domain Name of the Computer.
IS_INFRARED_SUPPORTED	Indicates whether infrared is supported or not.
MODEL	Contains details about the model of the Computer.
NO_OF_PROCESSORS	Contains the list of Processors in the Computer
SYSTEM_TYPE	Contains the system type of the computer.
TOTAL_RAM_MEMORY	Contains the total RAM memory of the Computer
TOTAL_RAM_MEMORY_MB	Contains the total RAM memory of the Computer in MB
COMPUTER_TYPE	Describes the type of computer as Desktop/laptop/palmtop..etc. Default value is 2 - unknown
MANUFACTURER_ID	A Unique ID for each hardware component.
SERVICE_TAG	Contain the system information regarding manufacturing. The Service tag will be unique across all workstations and this can be used to uniquely identify a particular system.
STATUS	Contains the current status of computer.
TOTAL_SIZE_GB	Contains information about the total size of the hard disk in GB.
FREE_SPACE_GB	Contains information about the free space of the hard disk in GB.
PRIMARY_OWNER_NAME	Contains the name of the primary owner of the Computer.

AgentContact

Column Name	Description
RESOURCE_ID (PK)	Resource ID from the Resource table
LAST_CONTACT_TIME	Contains the last time of the Agent
CONTACT_TYPE	Contains contact type like startup, logon, refresh, etc.
LOGGED_ON_USERS	Contains information about Users who have been logged on to this computer.

InvComponent

Column Name	Description
COMPONENT_ID (PK)	Component ID from InvComponent table.
COMPUTER_ID	Computer ID from InvComputer table.
COMPONENT_CATEGORY	The category of inventory object as 1 = OS, 2 = Hardware and 3 = Software.

InvManufacturer

Column Name	Description
MANUFACTURER_ID (PK)	Manufacturer ID from InvHW table
MANUFACTURER_NAME	The name of the inventory object.

BranchMemberResourceRel

Column Name	Description
BRANCH_OFFICE_ID (PK)	Unique ID for each branch office.
RESOURCE_ID	Resource ID from Resource table.

InvBios

Column Name	Description
COMPONENT_ID (PK)	Component ID from InvComponent table
VERSION	The version of the Bios.
RELEASE_DATE	The date in which the bios is released.
YEAR_OF_INSTALLATION	The year in which bios is installed.

InvComputerOSRel

Column Name	Description
COMPUTER_ID (PK)	Computer ID from InvComputer table.
COMPONENT_ID	
SOFTWARE_ID	Software ID from the InvSW table.
OS_VERSION	Contains the version of the given software.
SERVICE_PACK	Contains information about the service pack applied on the Operating System.
REGISTERED_USER	Contains information about the user for whom the Operating System is registered.
VIRTUAL_MEMORY	Contains the virtual memory of the computer in KB.
FREE_VIRTUAL_MEMORY	Contains the free virtual memory of the computer in KB.
VIRTUAL_MEMORY_MB	Contains the virtual memory of the computer in MB.
FREE_VIRTUAL_MEMORY_MB	Contains the free virtual memory of the computer in MB
VISIBLE_MEMORY	Contains the visible or physical memory of the computer in KB
FREE_VISIBLE_MEMORY	Contains the free visible or physical memory of the computer in KB
VISIBLE_MEMORY_MB	Contains the visible or physical memory of the computer in MB
FREE_VISIBLE_MEMORY_MB	Contains the free visible or physical memory of the computer in MB
BUILD_NUMBER	Contains the Build number of an operating system.
SERVICE_PACK_MAJOR_VERSION	Contains the Major version number of the service pack installed on the computer system

SERVICE_PACK_MINOR_VERSION	Contains the Minor version number of the service pack installed on the computer system.
INSTALLED_DATE	Contains the installed date of the software.

InvSW

Column Name	Description
SOFTWARE_ID (PK)	Unique id for each software in the inventory
SOFTWARE_NAME	Contains the Particular software name
SOFTWARE_VERSION	Contains the Version of given software
DISPLAY_NAME	Contains the Display name of a software
MANUFACTURER_ID	
DETECTED_TIME	The time at which the software was detected for FIRST time in the network in datetime format
IS_USAGE_PROHIBITED	Indicates whether a software is prohibited for usage or not. 0-Not Assigned, 1-Allowed, 2-Prohibited
SOFTWARE_TYPE	The category of the software. 0 - UnIdentified, 1 - Commercial, 2 - Non Commercial
IS_UNINSTALLABLE	Indicates whether a S/W can be uninstallable or not. Stored Values: NA / Yes / No
INSTALLED_FORMAT	Indicates S/W installed formats. Stored Values: NA / MSI / EXE / MSI and EXE.
COMMENTS	Comments about the given software.
IS_IN_USE	Whether the software is in use in current network.

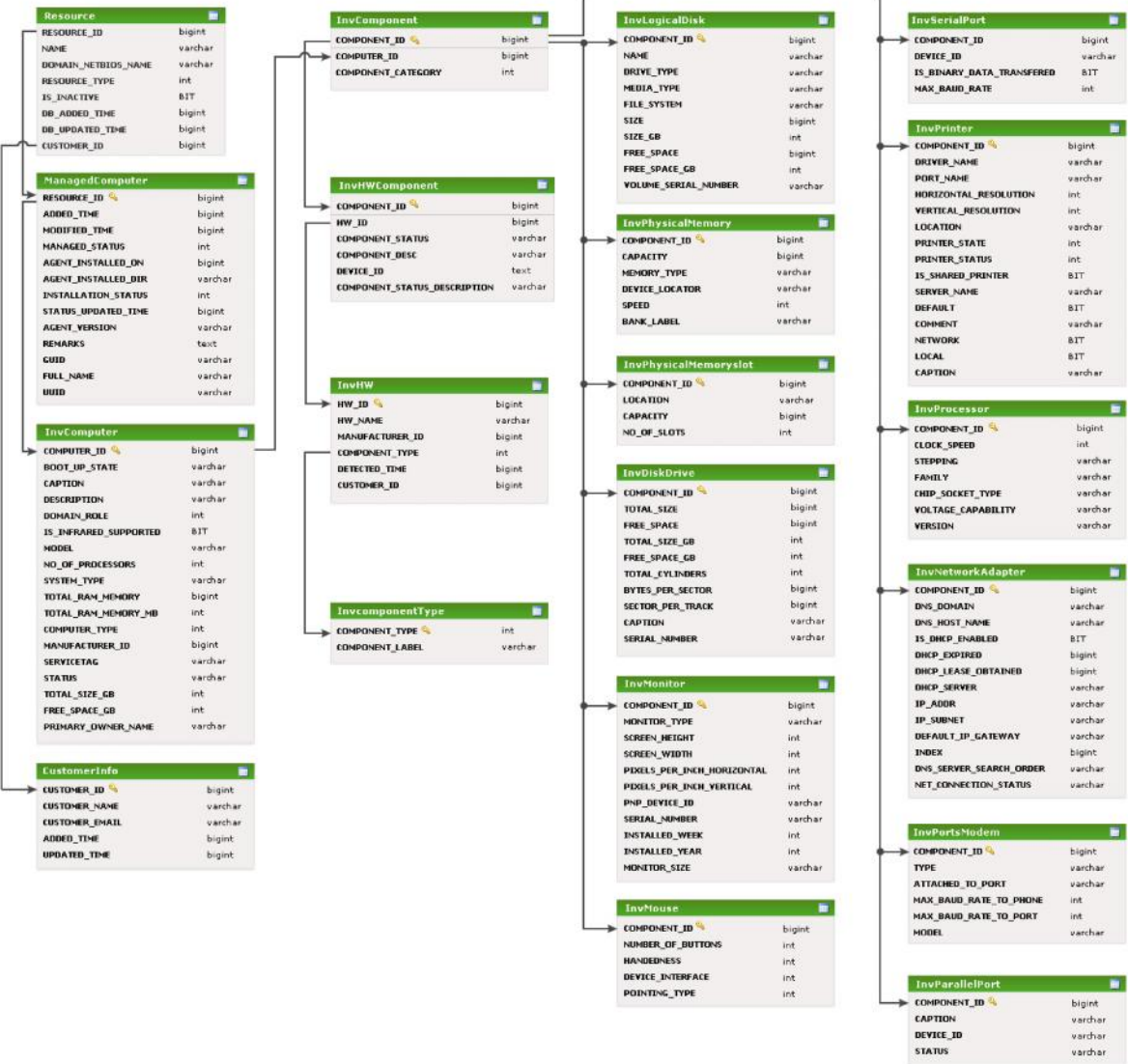
BranchOfficeDetails

Column Name	Description
BRANCH_OFFICE_ID (PK)	Branch office ID from the BranchMemberResourceRel table
BRANCH_OFFICE_NAME	Contains the name of the branch office.
AGENT_LOCATION	Contains the Agent location in server.

ER Diagram - Software



ER Diagram - Hardware



ER Diagram - Service

